

Oregon Department of Agriculture



Ag Issues and Hemp

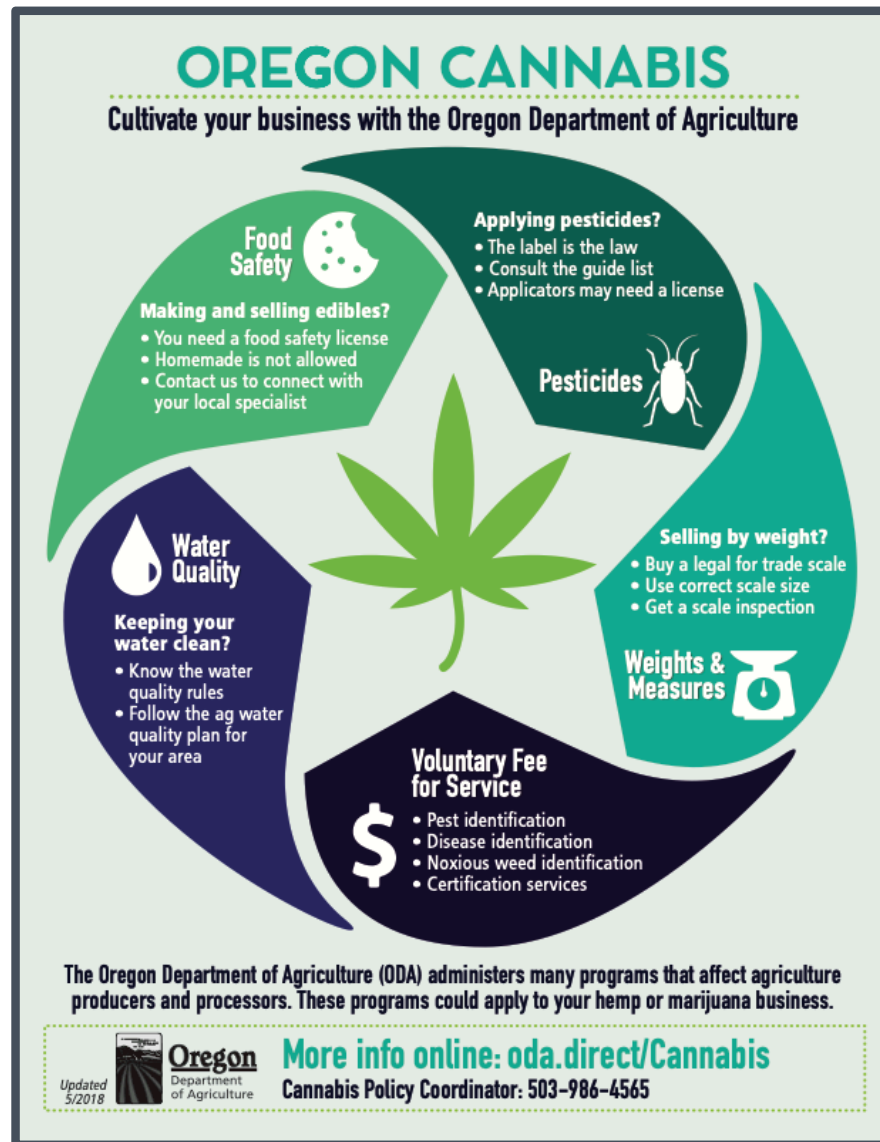
Hemp vs marijuana

 All cannabis plants

 Hemp – 0.3% THC or less

 Marijuana illegal at Fed. level

Like any other ag crop



Oregon hemp requirements



Grower registration

Preharvest testing



Handler registration



Ag hemp seed registration

Exponential growth

Registration Year	No. of Growers	No. of Handlers	No. of Acres
2015	13	13	105
2016	83	66	1,200
2017	246	189	3,000
2018	584	212	11,754
2019 (Oct. 17th)	1947	530	>63,000

2018 Farm bill

- ✓ Removes hemp and all derivatives from CSA
- ✓ Does not replace state law
- ✓ USDA working on rules
- ✓ Will submit a state plan as soon as USDA rules are available

Topics of conversation



- ▣ A lot of new farmers
- ▣ Confusion around testing requirements – both pre-harvest and post-harvest
- ▣ Law enforcement
- ▣ Cross-pollination
- ▣ Livability issues

Thank you!



✓ oda.direct/cannabis

✓ oda.direct/hemp

✓ oda.fyi/subscribe